



A Touchstone Energy® Cooperative 

P.O. Box 278, WaKeeney, KS 67672  
800-456-6720

[www.westerncoop.com](http://www.westerncoop.com)  
[www.facebook.com/WesternCoopElectric](https://www.facebook.com/WesternCoopElectric)

## WESTERN COOPERATIVE ELECTRIC **NEWS**

### WESTERN COOPERATIVE ELECTRIC, INC.

#### BOARD OF TRUSTEES

**Nick Zerr**  
President

**Terry Hobbs**  
Vice President

**Landon Heier**  
Secretary-Treasurer

**Steve Hausler**  
Trustee

**Marvin Keller**  
Trustee

**Cody Howland**  
Trustee

**Tim Stanton**  
Trustee

**Dale Weinhold**  
Trustee

**Hale Sloan**  
Trustee

#### GENERAL MANAGER

**Nolan Numrich**  
CEO/General Manager

#### CONTACT US

635 S. 13th Street  
P.O. Box 278  
WaKeeney, KS 67672  
785-743-5561  
FAX: 785-743-2717  
[www.westerncoop.com](http://www.westerncoop.com)

#### LIKE US ON FACEBOOK

Be sure to LIKE us on Facebook! Just go to [www.facebook.com/WesternCoopElectric](https://www.facebook.com/WesternCoopElectric) to find co-op news, energy tips, photos from co-op events and more!

### STRAIGHT TALK FROM THE TOP

## Stay Warm and Stay Safe



**Nolan Numrich**

As winter settles across our service territory, I want to take a moment to visit with you about two things that matter deeply to all of us at Western Cooperative

Electric: staying warm and staying safe.

Cold weather has a way of testing more than just our furnaces. It tests our homes, our vehicles, our livestock operations — and sometimes our patience. When temperatures drop, and wind chills plunge, electricity becomes more than a convenience. It becomes essential. Our crews understand that responsibility, and they prepare year-round for moments like these. From maintaining power lines to monitoring power supply and responding to outages in difficult conditions, their goal is simple: keep the lights on and keep you safe.

That said, winter storms can still create challenges. Heavy snow, ice and strong winds can damage lines or make travel unsafe for our crews. If an outage does occur, please know that safety always comes first. Reporting outages promptly by calling our office helps us respond efficiently, but we also ask for your patience if conditions slow restoration

efforts. Rest assured — our team will be working as quickly and safely as possible.

There are also steps you can take at home and on the farm to prepare for extreme cold. Make sure space heaters are kept away from flammable materials and never run unattended. Check that backup generators are properly ventilated and operated according to manufacturer guidelines — carbon monoxide is a serious and silent danger.

Energy efficiency matters in winter too. Simple actions like sealing drafts, keeping garage doors closed, and setting thermostats thoughtfully can help manage energy use while keeping your family comfortable. These small steps can add up, especially during extended cold spells. Follow us on social media for more tips.

At Western Cooperative Electric, we are more than an electric utility — we are a cooperative. That means our mission is rooted in service, community and care for one another. As you look out for your family and neighbors this winter, know that we are doing the same from our end of the line.

On behalf of our board, employees and crews, thank you for your trust and partnership. Stay warm, stay safe and have a Happy New Year!

**HERE TO SERVE,  
NOLAN NUMRICH  
CEO/GENERAL MANAGER**

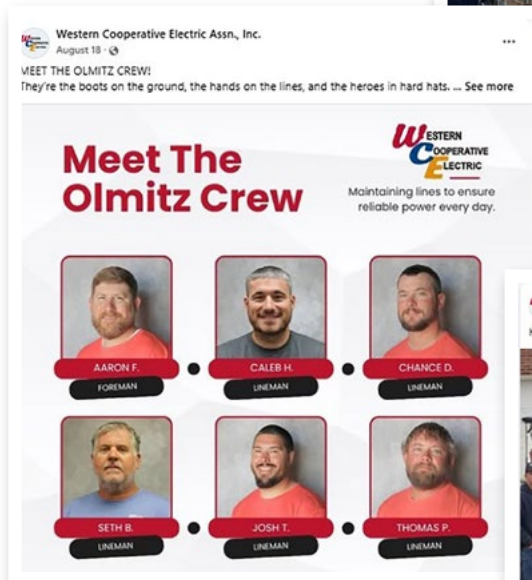
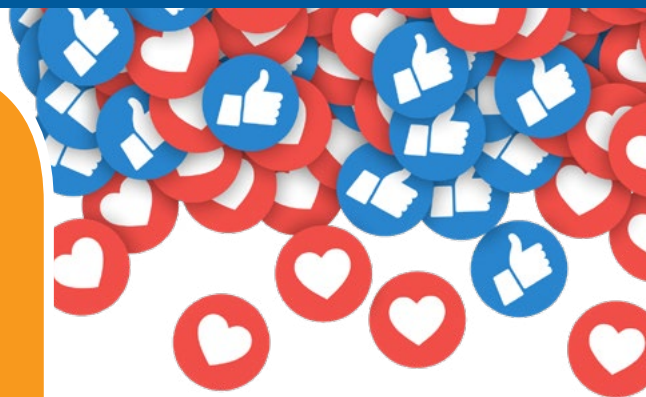
# FOR 10

## Social Media Posts of the Year

As we step into 2026, we're sending a huge **THANK YOU** to our members for another incredible year of support. Together, we've powered our towns, shared big moments, and — let's be honest — you've made it clear how much you adore our linemen (and we absolutely do too!).

Looking back at the Top 10 Social Media Posts of 2025, we're reminded how strong our community connection is across every outpost and corner of our service area. Here's to a bright, energized new year ahead. Thanks for being the spark that keeps our cooperative family shining.

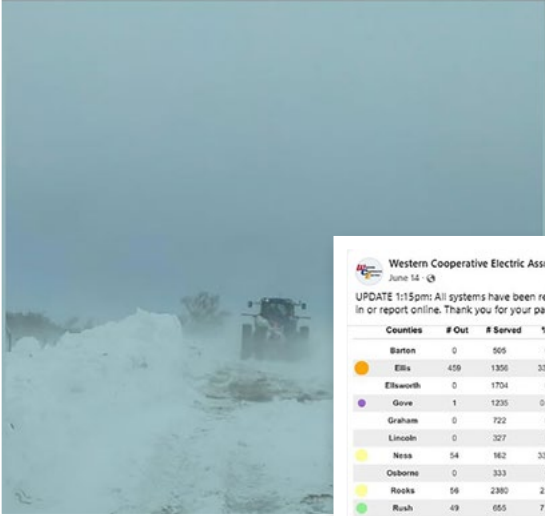
## Happy New Year!





Western Cooperative Electric Assn., Inc.  
March 19 · 🌐

Huge Shoutout to the Farmers, County Road & Other Crews helping us navigate these snow packed roads!!! Your support is making it possible for our linemen to get out and... See more



Western Cooperative Electric Assn., Inc.  
June 12 · 🌐

UPDATE 1:15pm: All systems have been restored if you are currently still without power please call in or report online. Thank you for your patience and understanding.... See more

Counties	# Out	# Served	% Out
Barton	0	505	0%
Ellis	459	1306	33.85%
Ellsworth	0	1704	0%
Grove	1	1235	0.08%
Graham	0	722	0%
Lincoln	0	327	0%
Ness	54	162	33.33%
Osborne	0	333	0%
Rooks	56	2360	2.35%
Rush	49	655	7.48%
Russell	0	510	0%
Sheridan	0	639	0%

**OUTAGE ALERT**

Western Cooperative Electric Assn., Inc.  
September 8 · 🌐

MEET THE PLAINVILLE CREW:  
They know the terrain, they know the lines—and they definitely know how to get the job done. ... See more

## Meet The Plainville Crew

**WESTERN COOPERATIVE ELECTRIC**  
Maintaining lines to ensure reliable power every day.



Western Cooperative Electric Assn., Inc.  
August 29 · 🌐

MEET THE ELLSWORTH CREW!  
From sunrise calls to stormy nights, this crew knows what it takes to keep Ellsworth powered and protected. ... See more

## Meet The Ellsworth Crew

**WESTERN COOPERATIVE ELECTRIC**  
Maintaining lines to ensure reliable power every day



www.westerncoop.com

Western Cooperative Electric Assn., Inc.  
November 10 at 3:43 PM · 🌐

Western Cooperative Electric has announced the first-ever recipient of its new W.O.R.K. (Western Opportunity for Rural Kansas) Scholarship, created to support members w... See more

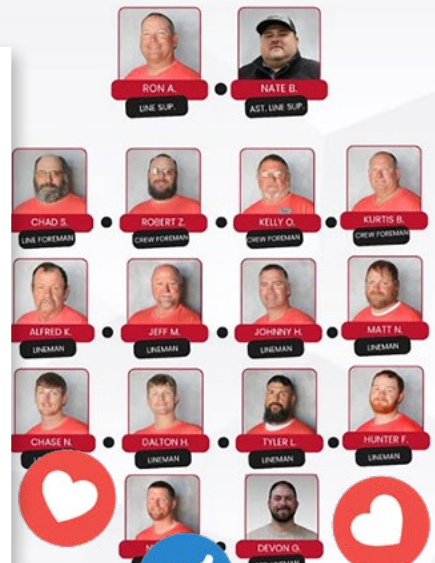


Western Cooperative Electric Assn., Inc.  
September 19 · 🌐

MEET THE WAKEENEY CREW! ... See more

## Meet The Wakeeney Crew

**WESTERN COOPERATIVE ELECTRIC**  
Maintaining lines to ensure reliable power every day.





## HIGH SCHOOL JUNIORS NOW ACCEPTING APPLICATIONS FOR YOUTH TRIPS!



All-expenses-paid leadership trips to Washington, D.C., and Steamboat Springs, Colorado, are available for high school juniors whose parents or guardians are members of Western Cooperative Electric.

### CONTESTANTS MUST COMPLETE THE APPLICATION BY JAN. 7, 2026.

Contestants will be mailed an entry packet with next steps which include an open book quiz and a video entry. Finalists are scored and if necessary a remote interview will be scheduled. The student with the top scores gets the first selection of trips. The process will move along quickly — apply now at [www.westerncoop.com/youth-tour](http://www.westerncoop.com/youth-tour) before it's too late.

## MARK YOUR CALENDARS

- ▶ **JAN. 7** — Youth Trip Applications Due
- ▶ **FEB. 27** — Trustee Nominations Due
- ▶ **APRIL 1** — Youth Scholarships Due
- ▶ **MAY 1** — Sharing Success Grants Due
- ▶ **MAY 13** — WCE Annual Meeting
- ▶ **AUG. 1** — W.O.R.K Scholarship Applications Due

# A Commitment to Leadership

## Trustees Hausler and Stanton earn CCD certificates

At Western Cooperative Electric, leadership isn't just a title — it's a responsibility. And this year, two of our dedicated trustees, **STEVE HAUSLER AND TIM STANTON**, took that responsibility one step further by earning their Credentialed Cooperative Director (CCD) certificates from the National Rural Electric Cooperative Association (NRECA).

In today's fast-changing energy landscape, board members face new challenges every day. From evolving technologies to changing regulations and shifting member expectations, the role requires more than attending meetings — it demands ongoing learning, awareness and a deep understanding of the cooperative way of doing business.

That's why Western encourages its board to continue strengthening their skills through NRECA's trusted education programs. The CCD certification is one of the first major milestones in that journey, requiring trustees to complete five core courses focused on the foundations of effective cooperative governance:

- ▶ Director Duties and Liabilities
- ▶ Understanding the Electric Business
- ▶ Board Operations and Process
- ▶ Strategic Planning
- ▶ Financial Decision Making

By completing this curriculum, Hausler and Stanton have demonstrated



**Tim Stanton (top left) and Steven Hausler (bottom left) accept their Credentialed Cooperative Director certificates from Board President Nick Zerr.**

their commitment to serving Western's member-owners with knowledge, integrity and leadership rooted in cooperative principles.

NRECA represents nearly 900 consumer-owned electric cooperatives nationwide, serving more than 42 million people across 48 states. Among its 7,200 directors, trustees like Stanton and Hausler stand out as examples of what it means to lead with purpose.

Their accomplishment strengthens not only our board — but the entire cooperative as well.

**Their accomplishment strengthens not only our board  
— but the entire cooperative as well.**