



## WESTERN COOPERATIVE ELECTRIC

# NEWS

### WESTERN COOPERATIVE ELECTRIC, INC.

#### BOARD OF TRUSTEES

**Nick Zerr**  
President

**Terry Hobbs**  
Vice President

**Landon Heier**  
Secretary-Treasurer

**Steve Hausler**  
Trustee

**Marvin Keller**  
Trustee

**Cody Howland**  
Trustee

**Dennis McNinch**  
Trustee

**Hale Sloan**  
Trustee

**Tim Stanton**  
Trustee

#### GENERAL MANAGER

**Nolan Numrich**  
CEO/General Manager

#### CONTACT US

635 S. 13th Street  
P.O. Box 278  
WaKeeney, KS 67672  
785-743-5561  
FAX: 785-743-2717  
[www.westerncoop.com](http://www.westerncoop.com)

#### LIKE US ON FACEBOOK

Be sure to LIKE us on Facebook! Just go to [www.facebook.com/WesternCoopElectric](http://www.facebook.com/WesternCoopElectric) to find co-op news, energy tips, photos from co-op events and more!

## STRAIGHT TALK FROM THE TOP

# Local People Serving Local People

One of Western Cooperative Electric's greatest strengths is that we are local people serving local people. That idea is at the heart of the cooperative difference, and it was especially visible during this year's annual meeting and trustee election.

Western is not owned by distant investors or outside shareholders. We are owned by the members we serve. That means the people receiving electric service from Western also have a voice in how the cooperative is governed. At the annual meeting, members had the opportunity to participate in the process, hear updates on the cooperative, and converse with the trustees who will help guide Western's future.

Our board of trustees is made up of members elected by members. These trustees live in our service area, understand the needs of rural Kansas, and make decisions with the cooperative's long-term interests in mind. Their role is important because electric service is essential to every home, farm, business, school and community we serve.

But local ownership does not stop with the board. Many of Western's employees are also members of the cooperative. They are not just working on a system; they are working on their system. The same lines they maintain, the same bills they help explain, the same outages they respond to, and the same communities they serve are part

of their everyday lives too.

That creates a unique level of commitment. When storms roll through, our crews know they may be restoring power to a neighbor, a family member, a local business, or even their own home. When our member services team answers a call, they understand the person on the other end is more than an account number. They are a fellow member-owner of the cooperative.

This local connection matters. It builds accountability, trust and pride in the work we do. It reminds us that Western's mission is not only to provide reliable and affordable electric service, but to strengthen the communities we all call home.

Thank you to the members who participated in this year's annual meeting and trustee election. Your involvement helps keep Western strong, local and focused on the people we serve.

That is the cooperative difference: local people, local leadership, and local commitment powering rural Kansas together.



**Nolan Numrich**

**HERE TO SERVE,  
NOLAN NUMRICH  
CEO/GENERAL MANAGER**

## HONORING A LEGACY OF SERVICE: DALE WEINHOLD

After years of dedicated service, Western Cooperative Electric extends its sincere appreciation to Board Trustee **DALE WEINHOLD** of Ellsworth as he retires from his position on the board.

Since joining the board in 2014, Dale has been a steady and dependable presence, known for his practical insight, thoughtful decision-making, and strong commitment to the members he represented. His leadership reflected a deep understanding of both the cooperative's mission and the rural communities it serves.

Throughout his tenure, Dale brought a grounded perspective to board discussions — one shaped by real-world experience and a genuine desire to do what was right for the membership. Whether addressing day-to-day matters or helping guide long-term decisions, he approached each responsibility with integrity and care.

In addition to his service with Western Cooperative Electric, Dale dedicated many years to his career with Rolling Hills Electric Cooperative until his retirement in 2008. His professional background further strengthened his ability to

serve the cooperative with knowledge, perspective and a strong work ethic.

Dale's contributions have helped support the continued strength and stability of the cooperative, and his influence will be felt well beyond his years of service.

As we recognize his retirement, we celebrate not only the time he has given, but the example he has set — one of quiet leadership, reliability and commitment to community.

Thank you, Dale, for your years of service, your steady leadership, and the lasting impact you've made on Western Cooperative Electric. You will always be an important part of our cooperative story.



After years of dedicated service, Western Cooperative Electric extends its sincere appreciation to Board Trustee Dale Weinhold of Ellsworth as he retires from his position on the board.

### COMMUNITY SOLAR:

## A SIMPLE WAY TO SHARE IN THE SUNSHINE

Out here in rural Kansas, we know the value of a good, sunny day. It powers our crops, brightens our communities — and now, it can help power your home, too.

But not everyone has the ability to install solar panels. Maybe your roof isn't the right fit, your home is shaded, or you simply don't want the upfront cost or maintenance. That's where Community Solar comes in.

Western Cooperative Electric's Community Solar program gives members the opportunity to be part of solar energy without installing anything at home. Instead of putting panels on your roof, you can subscribe to a portion — or "share" — of the Johnson Corner Solar Farm right here in our service area.

Each share represents a small portion of the energy produced by the solar farm. That energy is reflected on your monthly bill, along with a subscription charge. The amount of solar energy produced can vary depending on sunshine and weather, just like any Kansas day.

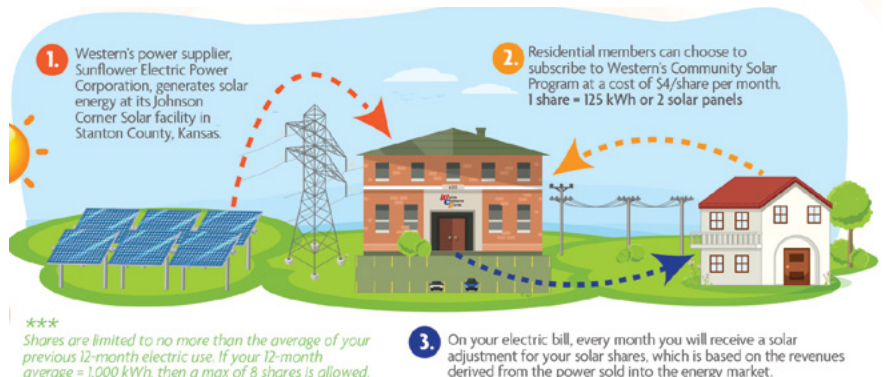
The beauty of Community Solar is in its simplicity. There's no equipment to maintain, no installation, and no long-term hassle. It's

solar energy made accessible — whether you live in town, on a farm or anywhere in between.

Community Solar isn't about making a big change overnight — it's about taking a simple, practical step toward supporting renewable energy right here at home.

Enrollment is limited, so if you've ever been curious about solar, this is a great place to start. Email [western@westerncoop.com](mailto:western@westerncoop.com) or call member services at 785-743-5561 for more information today.

### SUBSCRIPTION MODEL OVERVIEW



# Planning Ahead

## Why a Payable on Death form matters for ALL members

At Western Cooperative Electric, being a member means more than receiving reliable electric service — it means ownership. As a member, you earn capital credits over time, representing your share of the cooperative's margins.

While capital credits are typically retired and paid out over time, there may be a remaining balance at the time of a member's passing. That's where a Payable on Death (POD) form becomes an important and valuable tool.

A POD form allows you to designate one or more beneficiaries to receive any remaining capital credits tied to your membership. By completing this simple form, you provide clear direction to the cooperative, helping ensure your capital credits are distributed according to your wishes.

Without a POD designation on file, the process can become more complicated for your loved ones. Additional estate documentation may be required, which can delay the distribution of funds during an already difficult time. A POD form helps avoid unnecessary confusion and allows for a more efficient estate retirement process.

Members appreciate that the POD form is flexible and easy to manage. You may name one beneficiary or multiple beneficiaries, assign percentages, or update your designation at any time. The form applies only to your capital credits with Western Cooperative Electric and does not replace or interfere with your will or other estate plans.

Former members may also have capital credits on record and are encouraged to complete a POD form as well. Even if you no longer receive service from Western, your membership history may still carry value.

**WESTERN COOPERATIVE ELECTRIC**

## A SIMPLE Way TO CARE FOR YOUR FAMILY

### PAYABLE ON DEATH FORM

- ✓ No Probate Delays
- ✓ Faster, simpler estate retirement
- ✓ No guesswork for your family
- ✓ Keeps your benefits going where you choose

“This is one of the easiest things you can do today to help your family later.”

Completing a POD form is a simple step that can make a meaningful difference for your family. It ensures your wishes are known and helps ease the administrative process for those you leave behind.

If you are unsure whether you have a POD form on file, or if you would like to complete one, Western Cooperative Electric's Member Services team is here to help. Forms are available at the office, online or by request, and notary services are available during regular business hours.

For more information, contact Western Cooperative Electric at 785-743-5561 or visit [www.westerncoop.com](http://www.westerncoop.com).

**WESTERN COOPERATIVE ELECTRIC**

# Congrats!

# GRADUATES

CLASS OF 2026

**PROUD OF OUR GRADUATES!**  
**YOUR BRIGHT FUTURE STARTS HERE!**

[WWW.WESTERNCOOP.COM](http://WWW.WESTERNCOOP.COM)

# Safety in Every Step: Sticks and Grounds Testing

At Western Cooperative Electric, safety isn't just a priority — it is our No. 1 core value. It is part of everything we do.

This past month, WCE linemen conducted sticks and grounds testing alongside Safety Manager Jay Scott. While it may not always be visible to our members, this type of routine testing plays a critical role in keeping both our crews and the public safe.

“Sticks” and “grounds” are essential tools used by linemen when working on or around power lines. These pieces of equipment are designed to add a layer of protection against electrical shock. But like any tool, they must be regularly maintained and tested to ensure they are working exactly as intended.

Even the smallest flaw — something that can't be seen with the naked eye — can impact performance. That's why this testing process is so important. Each piece of equipment is carefully inspected and tested to meet strict safety standards before it's used in the field.

For our linemen, this means confidence in the job and an added layer of protection in high-risk situations. For our members, it means peace of mind knowing that the people maintaining your flow of power are equipped with reliable, thoroughly tested equipment.

Safety doesn't stop at the job site — it extends to every home, farm and business we serve. When our crews are protected, they can continue delivering safe, dependable electricity to our communities.

It's just one more way Western Cooperative Electric works behind the scenes to keep safety at the center of everything we do.



**ABOVE:** Our Olmitz crew inspects and measures the length of each ground chain before testing.



**LEFT:** Safety Manager Jay Scott (left) watches as linemen Seth Bittel and Josh Tessoroff test the resistance of a ground chain.



**ABOVE:** Lineman Caleb Hirsh and Safety Manager Jay Scott discuss how to use the hot stick tester.

**LEFT:** The Olmitz crew tests hot sticks.