



An Equal Opportunity Provider & Employer

A Touchstone Energy® Cooperative 

P.O. Box 278, WaKeeney, KS 67672
800-456-6720

www.westerncoop.com

www.facebook.com/WesternCoopElectric

WESTERN COOPERATIVE ELECTRIC

NEWS

Western Cooperative Electric, Inc.

Board of Trustees

Craig Crossland
President

Terry Hobbs
Vice President

Richard Schaus
Secretary-Treasurer

Landon Heier
Trustee

Frank Joy
Trustee

Marvin Keller
Trustee

Charles Luetters
Trustee

Susan Rohleder
Trustee

Dale Weinhold
Trustee

General Manager

Tom Ruth
General Manager

Contact Us

635 S. 13th Street
P.O. Box 278, WaKeeney, KS 67672
785-743-5561
FAX: 785-743-2717
www.westerncoop.com

Like us on Facebook

Be sure to LIKE
us on Facebook!

Just go to www.facebook.com/WesternCoopElectric

to find co-op news, energy tips, photos from co-op events and more!



FROM THE MANAGER

Western Retires \$1.25 Million in Capital Credits

The Western Cooperative Electric Board of Trustees approved the retirement of more than \$1.25 million to be returned to eligible members in December. Members with retirements more than \$20 can expect to receive checks in early January.

"The annual retirement of capital credits has always been one of Western Cooperative's top priorities," said General Manager Tom Ruth. "Returning excess margins to the consumers we serve is one of the many benefits of being a member, not just a customer."

Unlike investor-owned utilities, which only pay dividends to a small group of shareholders, electric cooperatives return excess revenue to the members we serve. Capital credits are one of the biggest perks of being



Tom Ruth

Continued on page 12D ►

CAPITAL CREDITS: REAPING THE BENEFITS OF BEING A CO-OP MEMBER



When a person establishes service with us, they become a member and are eligible for capital credits.



The allocated funds are used as operating capital for system improvements and maintenance.



Capital credits represent a member's share of the co-op's margins during the time they have membership.



Every year, the board evaluates the financial condition of the co-op to determine if we can retire capital credits. When the board decides to retire capital credits, we calculate the amount owed to each member.



Capital credits are earned by every member based on the amount of their electric use.



Current members who received electricity during the retirement period will receive a percentage of capital credits retirements through a check from the co-op.



At the end of the fiscal year, any funds (margins) remaining after expenses have been paid are allocated to the member's account.



Former members who received electricity during the time period being retired will be mailed a check to the forwarding address on record.

TOP 10

Social Media

Posts of the Year

Happy New Year from Western! We wanted to take a moment to review 2021's top social media posts. The past year seemed to fly by, and despite any challenges we faced, Western remained focused on serving our members. Western's employees remain dedicated to providing safe, reliable, and affordable power in 2022.

Follow us on social media to learn more about outage notifications, electrical safety, scholarship opportunities, and everyday happenings at your electric co-op.

Western Cooperative Electric Assn., Inc.
November 15 at 11:58 AM · 🌐

ICYMI Jared Casey, son of WCE's Plainville Field Supervisor Jerry Casey, scored the game-winning 2-pt conversion against Texas on Saturday night in an OT thriller!!! Congrats to the Kansas Jayhawks and an amazing family!!!!



KANSASCITY.COM
"That was Jared, wasn't it? Watch KU parents celebrate after son's catch beats Texas"

Western Cooperative Electric Assn., Inc.
August 9 · 🌐

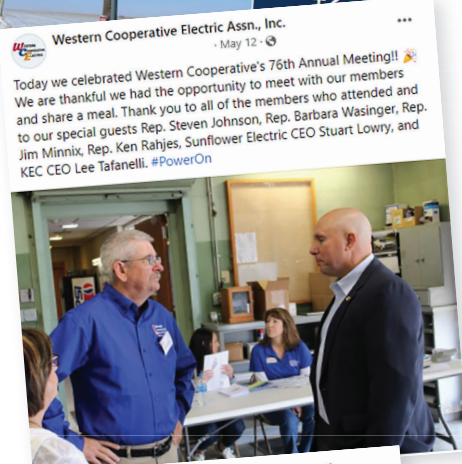
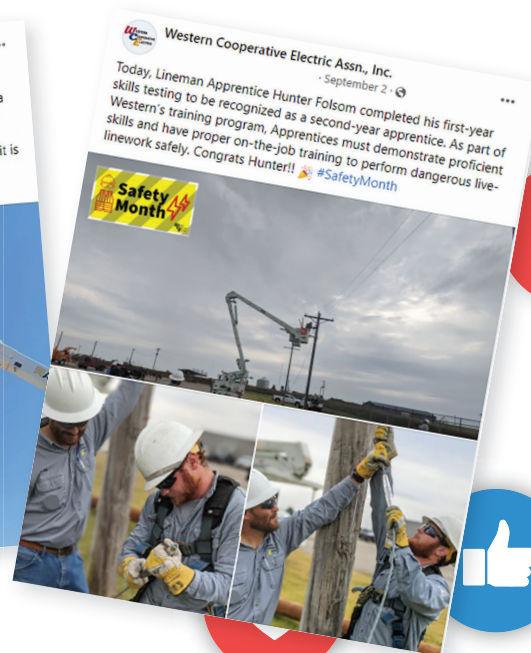
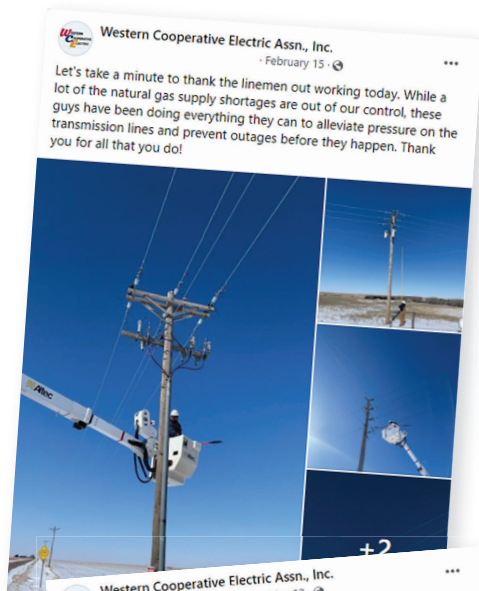
Saturday night's storm contained wind gusts of 60+ mph. Unfortunately Lane-Scott Electric sustained some heavy damage north of Ness City, including fifty-six broken poles. Fortunately, Western Co-op and Victory Electric out of Dodge City believe in the 7 Cooperative Principles including #6 Cooperation Among Cooperatives. We were able to send some crews to help provide mutual aid to our neighbors. Western helps out when we can because it may be us who needs the help next time. #cooperativedifference #CooperationAmongCooperatives



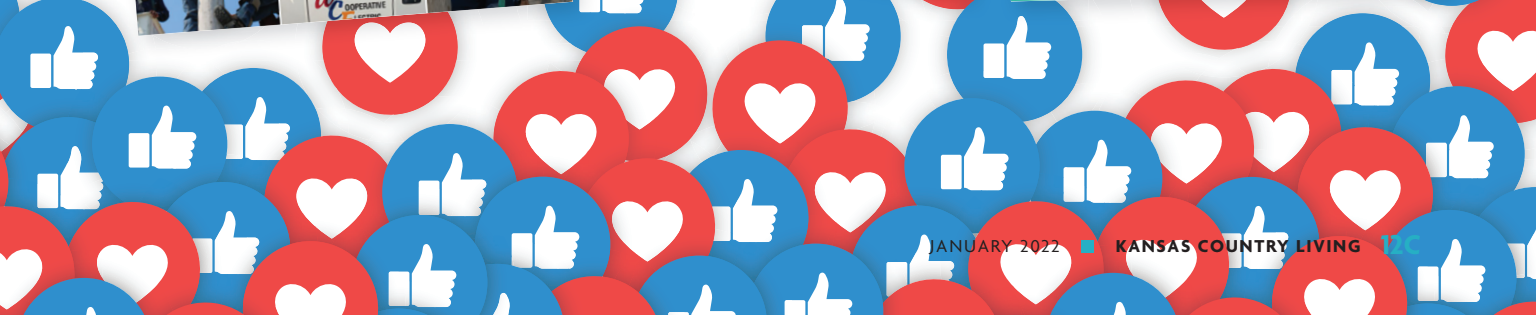
Western Cooperative Electric Assn., Inc.
July 17 · 🌐

We had a great time at the WaKeeney parade this morning!! Thank you to the linemen who take pride in the communities we serve!





Follow us on social media to learn more about outage notifications, electrical safety, scholarship opportunities, and everyday happenings at your electric co-op.



Western Retires \$1.25 million in Capital Credits *Continued from page 12A*

a member of Western and is part of our third cooperative principle — Members Economic Participation.

To qualify for a retirement check, members must have taken service from Western Cooperative in the year and territory being retired. For the 2021 retirement the West service area will receive 50% of the 2005 distribution co-op allocation (\$907,598). The East service area will receive 62.6% (\$354,093) of the 2018 G&T (Sunflower Electric) allocation.

Members who received electricity during the retirement period will receive their percentage of capital credit retirement based on the amount electricity used during the retirement period.

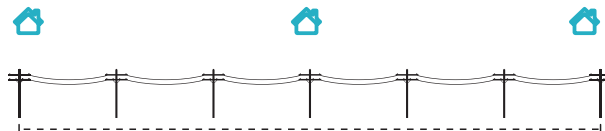
“As a cooperative, we don’t focus on achieving profit margins for a small group of investors because we are a not-for-profit business,” said Ruth. “By definition, a cooperative is an organization that is collectively owned and operated for the mutual benefit of all members. These benefits include the generation, accumulation, and return of capital.”

For more information about capital credits visit westerncoop.com/capital-credits. If a former member’s forwarding address has changed they may have unclaimed capital credits. To search a list of members with outstanding payments visit, westerncoop.com/unclaimed-capital-credits.

GOING THE EXTRA MILE

Electric co-ops maintain more miles of power lines per consumer than other electric utilities. Even though we power fewer consumers on our lines compared to other utilities, we’ll always go the extra mile for you, the consumer-members we proudly serve.

KANSAS ELECTRIC COOPERATIVES serve 3 consumer-members per mile of line.



OTHER ELECTRIC UTILITIES serve 32 consumers per mile of line.



Apply by Jan. 31 for Youth Leadership and Scholarship Opportunities

High school juniors are eligible for a \$1,000 scholarship and youth leadership opportunities!

2022 youth leadership scholarships are available for high school juniors whose parents or guardians are members of Western Cooperative Electric.

- ▶ The top four students will receive \$1,000 scholarships, with the fifth-place student receiving the \$250 Darrell Brown memorial scholarship.
- ▶ Contestants must complete the application by **JAN. 31, 2022**.
- ▶ Upon receipt of the application, contestants will be mailed an entry packet.
- ▶ Finalists are scored and selected based on a short essay, open-book quiz and an online interview.
- ▶ Winning students will have an opportunity to attend all-expenses-paid leadership training this Summer in Steamboat Springs, Colorado, or Topeka..

Scan the QR code or visit westerncoop.com/youth-tour to apply online.

