



# WESTERN COOPERATIVE ELECTRIC NEWS

## WESTERN COOPERATIVE ELECTRIC, INC.

### BOARD OF TRUSTEES

**Nick Zerr**

President

**Terry Hobbs**

Vice President

**Richard Schaus**

Secretary-Treasurer

**Landon Heier**

Trustee

**Frank Joy**

Trustee

**Marvin Keller**

Trustee

**Susan Rohleder**

Trustee

**Tim Stanton**

Trustee

**Dale Weinhold**

Trustee

### GENERAL MANAGER

**Tom Ruth**

General Manager

### CONTACT US

635 S. 13th Street

P.O. Box 278

WaKeeney, KS 67672

785-743-5561

FAX: 785-743-2717

[www.westerncoop.com](http://www.westerncoop.com)

### LIKE US ON FACEBOOK

Be sure to LIKE us on Facebook! Just go to [www.facebook.com/WesternCoopElectric](https://www.facebook.com/WesternCoopElectric) to find co-op news, energy tips, photos from co-op events and more!

## FROM THE MANAGER

# Addressing the Challenges of the New EPA Emissions Standards

We find ourselves at a pivotal moment as the Environmental Protection Agency (EPA) has released its final rule targeting existing coal-fired and new natural gas-fired power plants. This rule presents significant challenges for the electric industry across the nation, including our cooperative. The core issues and our stance on this pressing matter are outlined below.

### SIGNIFICANT CONCERNS WITH THE EPA'S FINAL RULE

► **UNLAWFUL.** The new EPA rule is seen as **UNLAWFUL**. It arguably exceeds the EPA's granted authority, conflicting with not only federal law but also recent Supreme Court decisions. The law requires that major rules of economic and political significance receive explicit congressional approval, which this rule lacks. Its implementation

could significantly increase electricity prices due to the expensive technologies it mandates.

► **UNACHIEVABLE.** The rule is **UNACHIEVABLE** in its current form. By 2032, it requires that all operating coal-fired units and new baseload gas-fired units capture and sequester 90% of their CO<sub>2</sub> emissions. The mandated carbon capture and sequestration (CCS) technology, involving the capture, transport and underground storage of CO<sub>2</sub>, remains commercially unproven and prohibitively expensive, far from being "adequately demonstrated" as required by the Clean Air Act.

► **UNREALISTIC.** We regard the rule as **UNREALISTIC**. The timeline for

*Continued on page 12C* ►



Tom Ruth



**LABOR Day**  
*Office Closing*

In observance of Labor Day,  
our office will be closed on  
**MONDAY, SEPT. 2.**

## WESTERN COOPERATIVE ELECTRIC AWARDS



# Scholarships to Local Students



Logan Clark



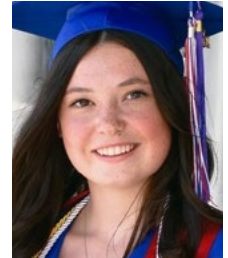
Lillian Payne



Kelsey Selensky



Avery Ziegler



Anna Thielen

MARTA PAYNE PHOTOGRAPHY

Western Cooperative Electric is proud to award five scholarships to distinguished high school seniors within our service area. These scholarships are part of Western Cooperative Electric's commitment to supporting the educational endeavors and future success of our community's youth.

### \$1,000 SCHOLARSHIP RECIPIENTS

This year, Western Cooperative Electric has awarded four scholarships of \$1,000 each to the following outstanding students:

- ▶ **LOGAN CLARK**, Ellsworth High School, plans to attend Hutchison Community College majoring in manufacturing engineering.
- ▶ **LILLIAN PAYNE**, Western Plains High School, plans to attend Fort Hays State University majoring in marketing and communications.
- ▶ **KELSEY SELENSKY**, Quinter High School, plans to attend Kansas State University and major in agricultural business.
- ▶ **AVERY ZIEGLER**, Trego Community High School, plans to attend Kansas State University and major in veterinary medicine.

### DARRELL BROWN MEMORIAL SCHOLARSHIP

In addition to these scholarships, Western Cooperative Electric is also honored to present **ANNA THIELEN**, Russell High School, with the \$250 **DARRELL BROWN**

**MEMORIAL SCHOLARSHIP.** This scholarship is in memory of Darrell Brown, a long-time trustee and friend of Western Cooperative Electric. It is awarded to a student who exemplifies the spirit of community and dedication. Thielen will continue her education at Kansas Wesleyan University, majoring in exercise science.

"Supporting the educational aspirations of our local students is a key part of our commitment to the community," said Nolan Numrich, assistant general manager and member services manager at Western Cooperative Electric. "We are proud to help foster the next generation of leaders and professionals who will continue to drive our community forward."

Western Cooperative Electric wishes all scholarship recipients the best in their academic pursuits and future careers. We are grateful for your hard work and dedication and look forward to seeing your future achievements.

For more information about the scholarships and other community initiatives, please visit [www.westerncooperative.com](http://www.westerncooperative.com).

## Addressing the Challenges of the New EPA Emissions Standards

Continued from page 12A ▶

constructing necessary CCS pipeline networks is insufficient to meet the EPA's stringent deadlines. Furthermore, the current rate of renewable energy installation is not on track to replace the energy capacity expected to be lost from retiring coal units swiftly. Estimates suggest it would take 45-55 years to replace all coal and natural gas generation with wind and solar power. Additionally, the North American Electric Reliability Corporation has warned that over 110 gigawatts of reliable generation will retire by 2033, potentially leading to widespread blackouts in 19 states during peak times over the next five years.

### OUR COMMITMENT AND ACTIONS MOVING FORWARD

While we are committed environmental stewards, our members should never have to choose between sustainable practices and reliable energy. Western Cooperative and our partner in generation Sunflower Electric have joined forces with the National Rural Electric Cooperative Association (NRECA) in challenging this rule. The litigation will likely extend into the foreseeable future, but we are proactively planning for all possible outcomes to ensure our cooperative remains robust and reliable.

Our board and staff diligently analyze potential paths forward. We will continue to prioritize economic viability, reliability and the integration of new technologies. We must explore every option as we navigate this complex and challenging landscape.

### STAY ENGAGED AND INFORMED

We value your involvement and support as we address these regulatory challenges. Your active participation is crucial. For those interested in further advocacy, I encourage you to join NRECA's Voices for Cooperative Power at [WWW.VOICESFORCOOPERATIVEPOWER.COM](http://WWW.VOICESFORCOOPERATIVEPOWER.COM) to help influence future energy policy decisions.

We will continue to keep you updated on progress and decisions regarding these issues. Thank you for your continued trust and engagement as we strive to serve you with the best possible energy solutions.

“Our board and staff diligently analyze potential paths forward. We will continue to prioritize economic viability, reliability and the integration of new technologies.”

**UNLAWFUL.**

**The rule is unlawful.**  
It violates the law, exceeds EPA's authority, and disregards Supreme Court rulings.

This graphic features the word "UNLAWFUL." in large, bold, yellow, distressed font at the top. Below it is a black and white photograph of the Supreme Court building. The background is a dark blue sky with a white mountain range silhouette. A small lightning bolt icon is in the bottom right corner.

**UNACHIEVABLE.**

**The technology isn't ready.**  
The rule mandates the widespread adoption of technology that is promising, but not ready for prime time.

The standards will inhibit cooperatives' ability to economically and reliably replace lost coal generation.

This graphic features the word "UNACHIEVABLE." in large, bold, yellow, distressed font at the top. Below it is a black and white photograph of a road stretching into a desert landscape. The background is a dark blue sky with a white mountain range silhouette. A small lightning bolt icon is in the bottom right corner.

**UNREALISTIC.**

**The timelines are unrealistic.**  
It is not reasonable to expect that the necessary industry changes will be in place in time to meet the EPA's requirements.

Even if it were reasonable, it would raise your electric bill and make your electricity less reliable.

This graphic features the word "UNREALISTIC." in large, bold, yellow, distressed font at the top. Below it is a black and white photograph of an industrial power plant. The background is a dark blue sky with a white mountain range silhouette. A small lightning bolt icon is in the bottom right corner.



# FARM SAFETY NEVER STOPS **ACTION** TAKE

**ALL DAY-EVERY DAY | 24-7/365**

**WWW.WESTERNCOOP.COM**

**Put safety first with alertness, focus and knowledge of potential hazards and safety steps.**

- ▶ Always use a spotter when operating hydraulic beds, lifts, arms or extensions.
- ▶ Keep equipment at least 20 feet from power lines.
- ▶ Look up when moving equipment such as extending augers or raising beds of grain trucks.
- ▶ Always set extensions to the lowest setting when moving loads.
- ▶ Never attempt to move a power line out of the way or raise it for clearance.
- ▶ Before moving machinery near power lines, contact your electric cooperative to measure power line height. Do not do this yourself. Once you know the height, you can determine appropriate equipment, implement and extension clearances.
- ▶ Do not get out of your truck, tractor or equipment if it makes contact with a power line.

If you are in an accident and power lines are touching the vehicle, remember to:

**ASSUME IT'S LIVE:** Always assume downed lines are live and dangerous. Do not touch or remove the wires and warn others to stay away.

**STAY PUT:** Unless there is a secondary emergency such as a fire, it is safer to stay inside the vehicle than to try to exit.

**CALL 911:** Let the dispatcher know you were in an accident and you have a downed power line on your vehicle. The authorities will contact the cooperative and lineworkers will be sent to disconnect the power.

**WARN OTHERS:** Witnesses may not notice the downed power line and try to help. Warn them to stay at least 50 feet away.

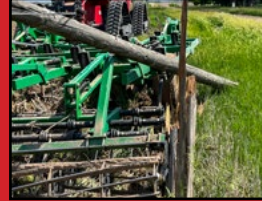


**HAY BALES STACKING BALES NEAR POWER LINES CAN CAUSE EQUIPMENT TO ARC AND START FIRE**  
EST. DAMAGES \$34,995\*

**\*ESTIMATED REPAIR PRICE DOES NOT INCLUDE DEATH OR INJURIES.**



**JOHN DEERE 9360 BROKEN POLE**  
EST. REPAIRS \$7,995\*



**CHISEL PLOW TOO CLOSE AND HIT POLE**  
EST. REPAIRS \$4,995\*



**JOHN DEERE PLANTER GPS SET TOO CLOSE TO POLE LINE**  
EST. REPAIRS \$4,995\*



**BRENT 1080 GRAIN CART AUGER CONTACTED POWER LINES**  
EST. REPAIRS \$3,995\*



**1991 JOHN DEERE EXCAVATOR DUG UP UNDERGROUND CONDUCTOR**  
EST. REPAIRS \$12,995\*



**2005 CHEVY 2500 HD DISTRACTED DRIVING**  
EST. REPAIRS \$35,995\*



**NO-TILL AIR DRILL DAMAGED HIGH VOLTAGE TRANSMISSION**  
EST. REPAIRS \$99,995\*



**2007 JOHN DEERE 9760 STS COMBINE LEFT AUGER OUT**  
EST. REPAIRS \$3,995\*



**2007 MACK TRUCK DISTRACTED DRIVING**  
EST. REPAIRS \$84,995\*



**2012 DRY FERTILIZER TRAILER BROKEN POLE**  
EST. REPAIRS \$729,995\*



**70' 2017 WESTFIELD AUGER HIT POWER LINES MOVING INTO PLACE**  
EST. REPAIRS \$16,995\*



**2018 END DUMP LIFTED INTO POWER LINES**  
EST. REPAIRS \$9,995\*



Report downed power lines or damages immediately 24/7

**800-456-6720**

635 S. 13th St. | P.O. Box 278 | WaKeeney, KS 67672